

## CadWorx: Steps to use Victaulic Content in Cadworx

- 1) Open a new drawing
- 2) Choose the drawing template you want
- 3) On "CADWORXPLANT I" window, click on "Setup" Button (See Figure 1)

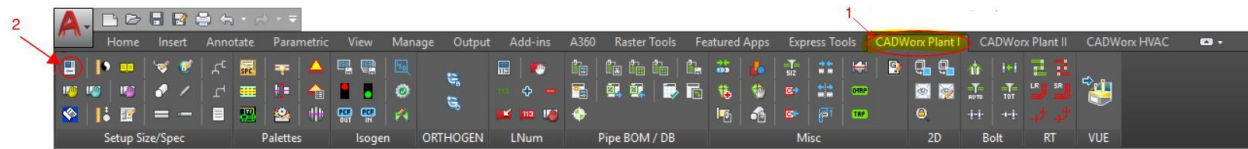


Figure 1

- 4) In "Setup" Window, go to Piping Rules and make sure that the following rules are the same than on Figure 2. (Apply pipe end rule = No and Apply Auto Coupling rule = Automatic – All connections)

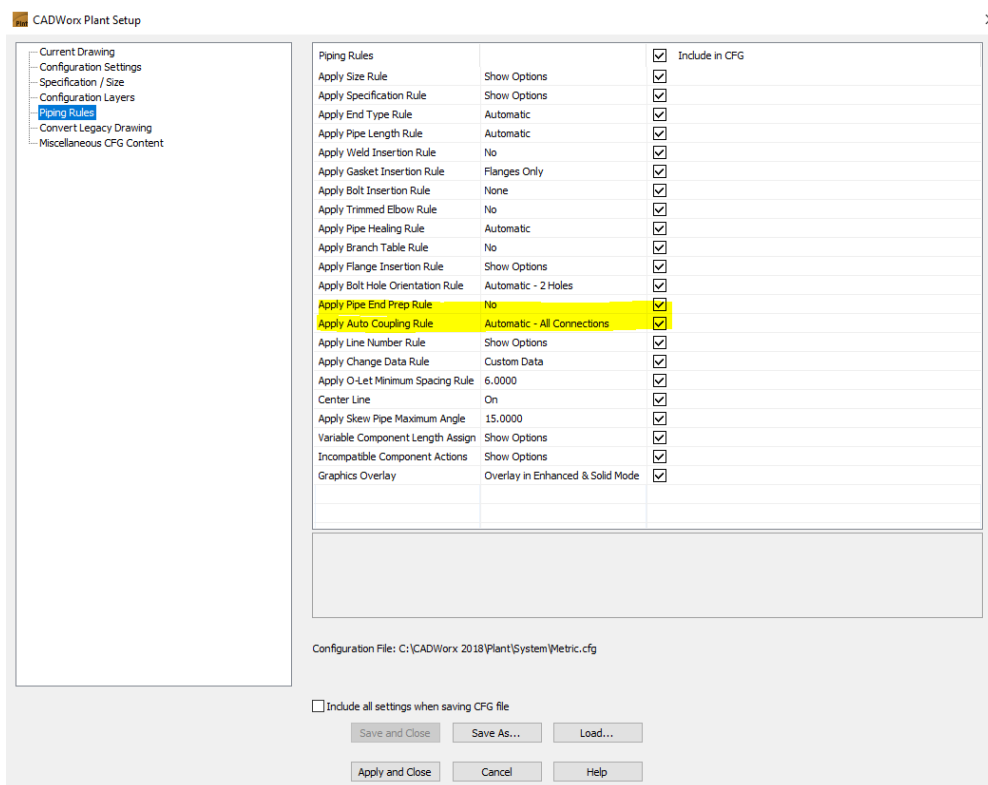


Figure 2

5) When Piping rules are created, go to Specification/Size and follow the steps shown on Figure 3:

1. Click on Browse and Select the Victaulic Content (Pay attention that the Victaulic Content must be located on the same path shown on Figure 4: "C:\CADWorx 2018\Plant\Spec")
2. Click on IPS and select the Default Main and Reduced Sizes.
3. Click on "Apply and Close".

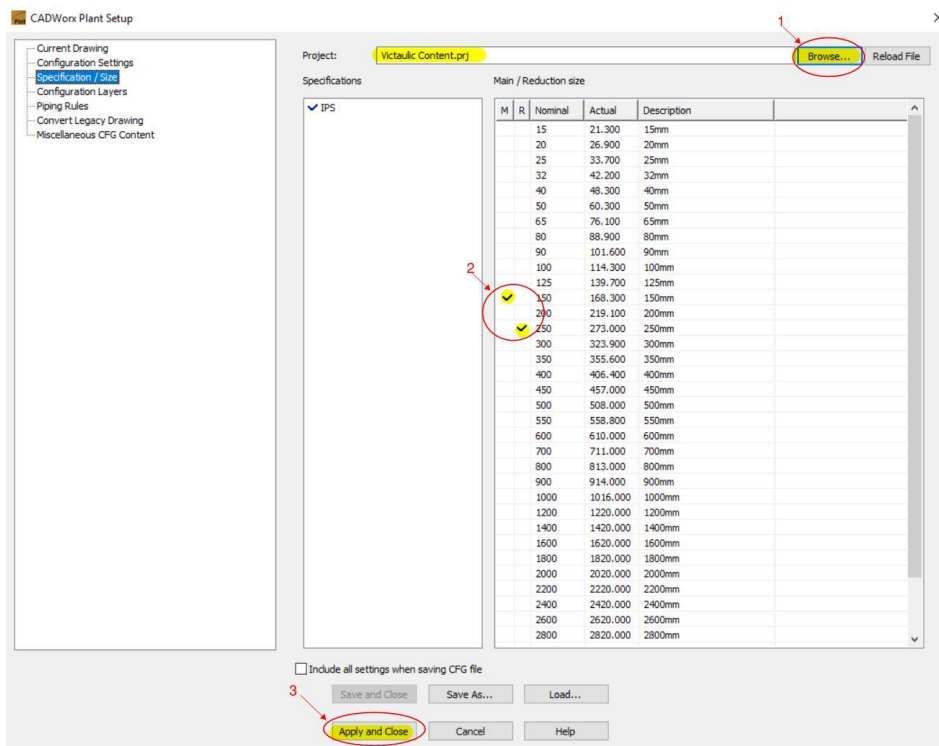


Figure 3

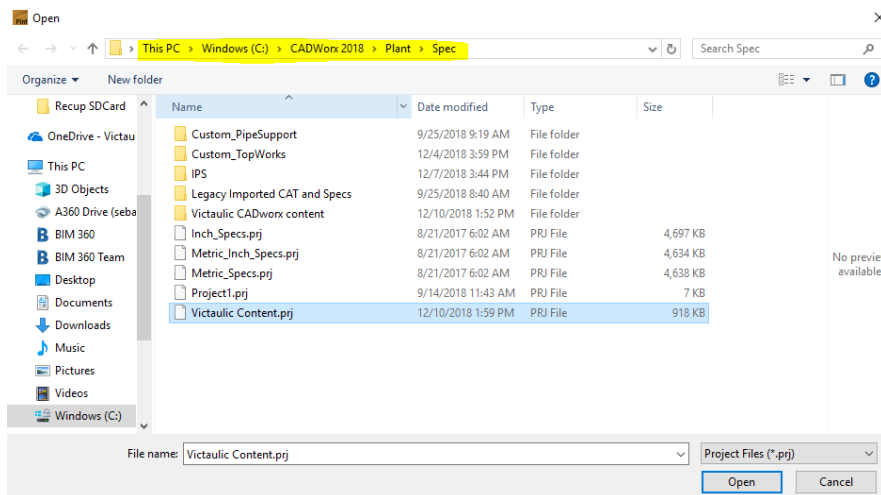


Figure 4

- 6) On CadWorx Spec View, select the size you want to use and make sure that the specification is “IPS” (As seen on Figure 5).
- 7) Select Vic-Pipe and start to draw your system

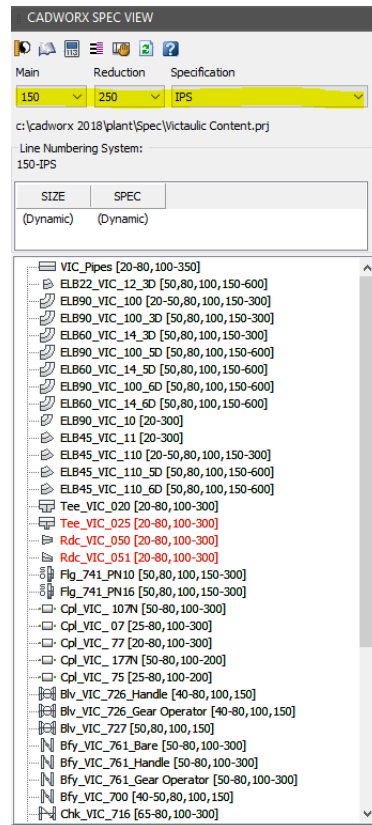


Figure 5